

RC Frame Building, Mirandola, Italy (Emilia-Romagna Earthquake, 2012)



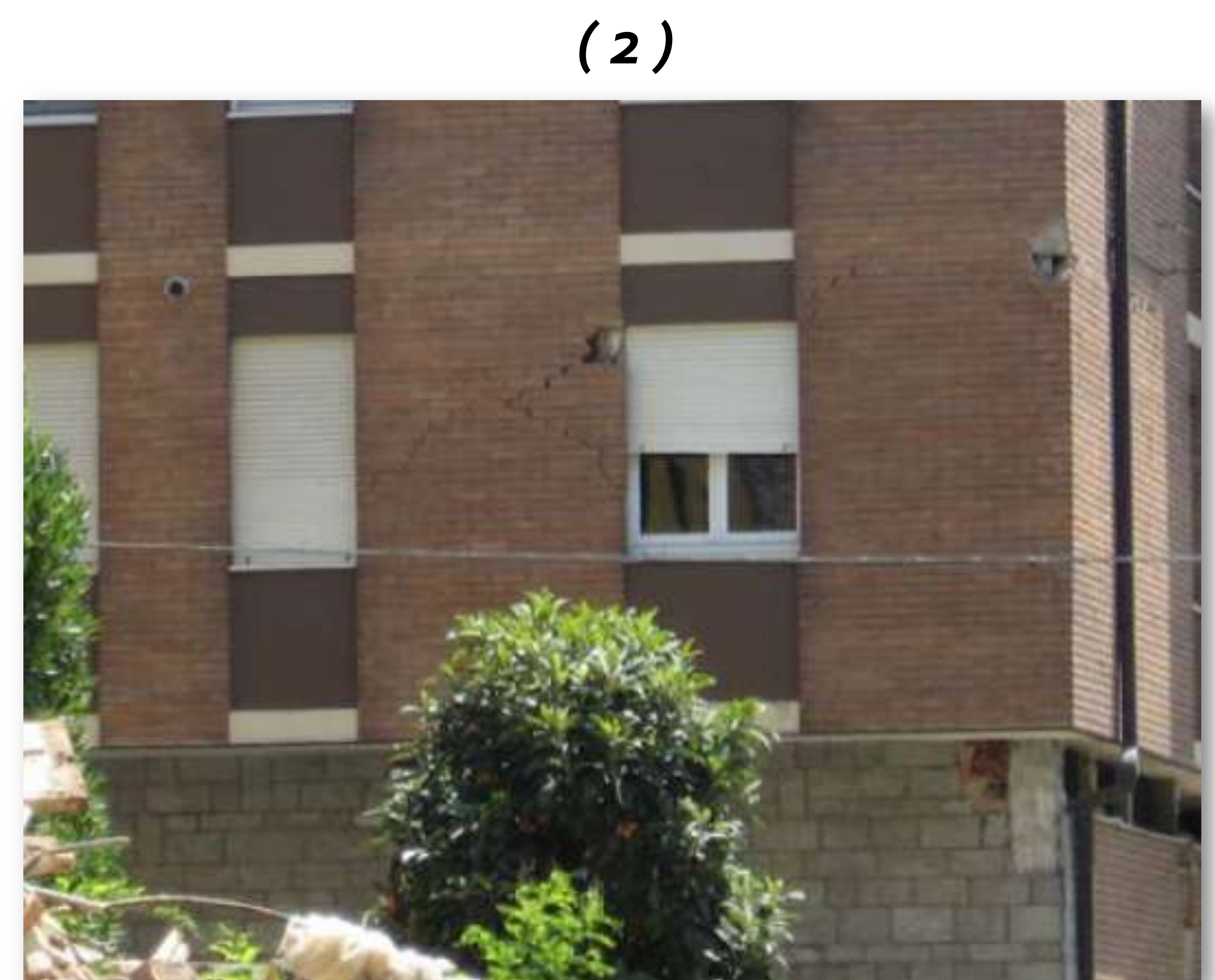
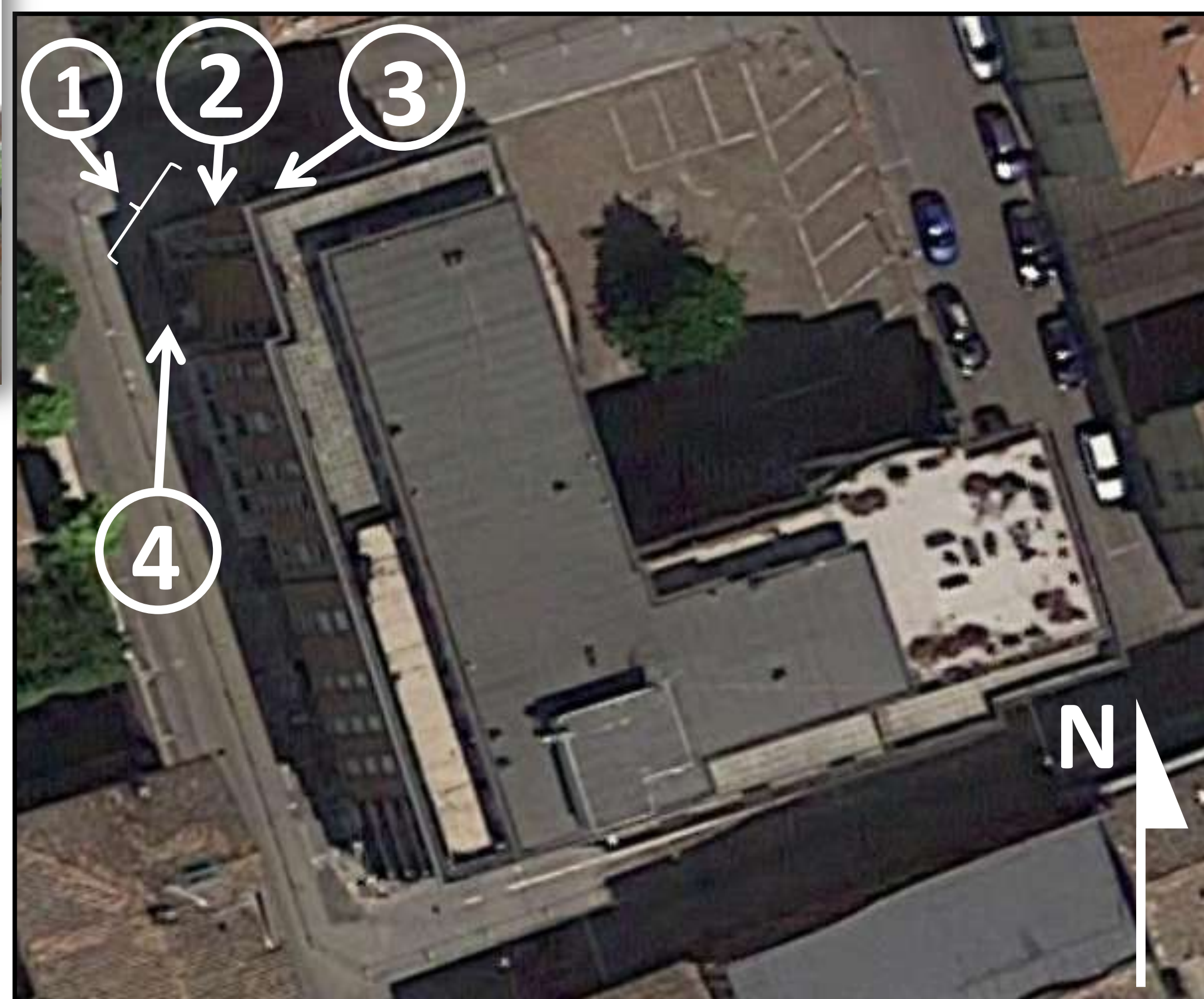
General Description: 6-story L-shaped residential RC building constructed before 2003¹. Ground floor devoted to commercial use.

Structure Description: Reinforced concrete frames built with infill masonry.

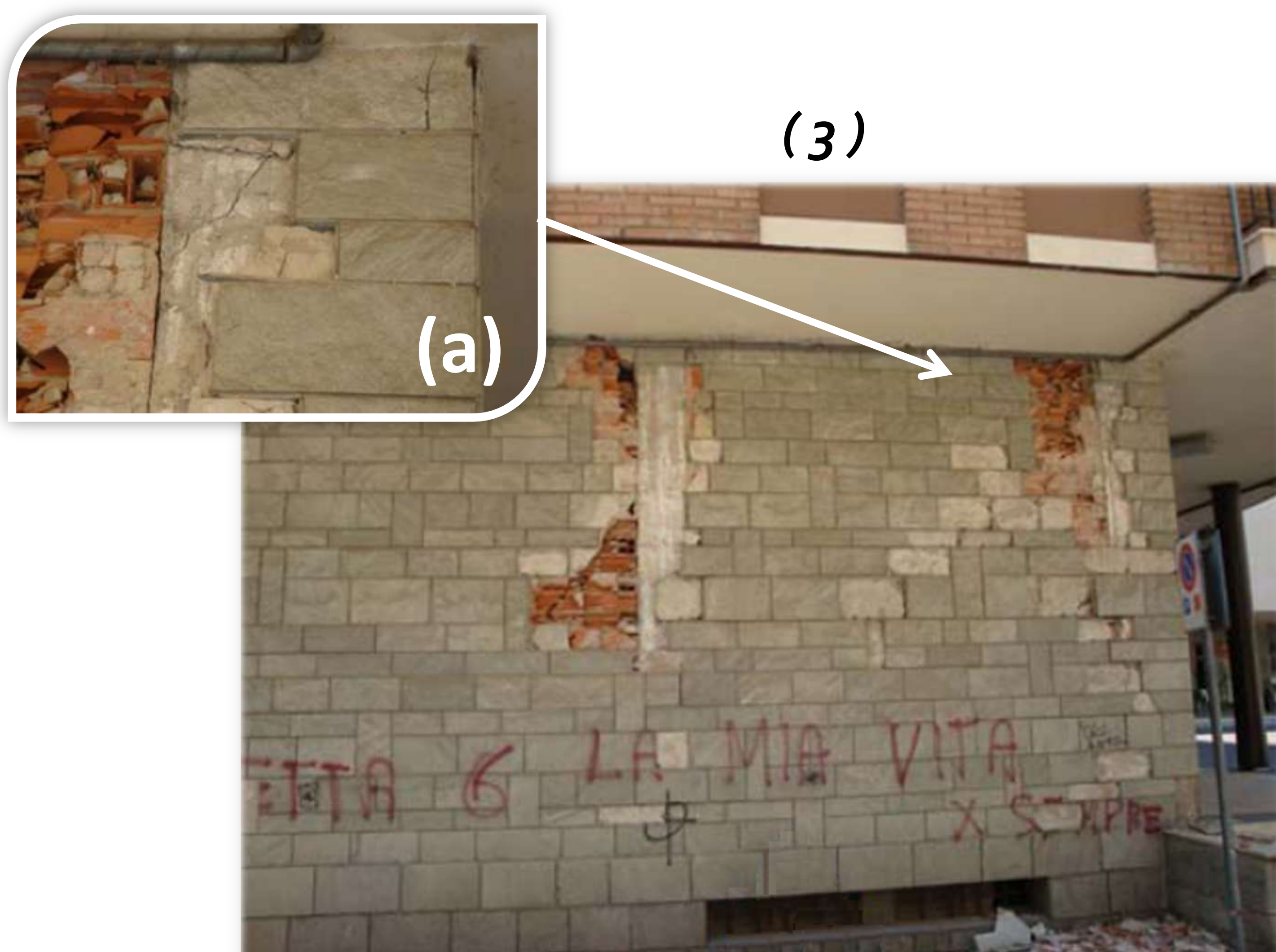
¹ The Emilia-Romagna region was not classified as a seismic zone in Italian hazard maps until 2003.



(1)

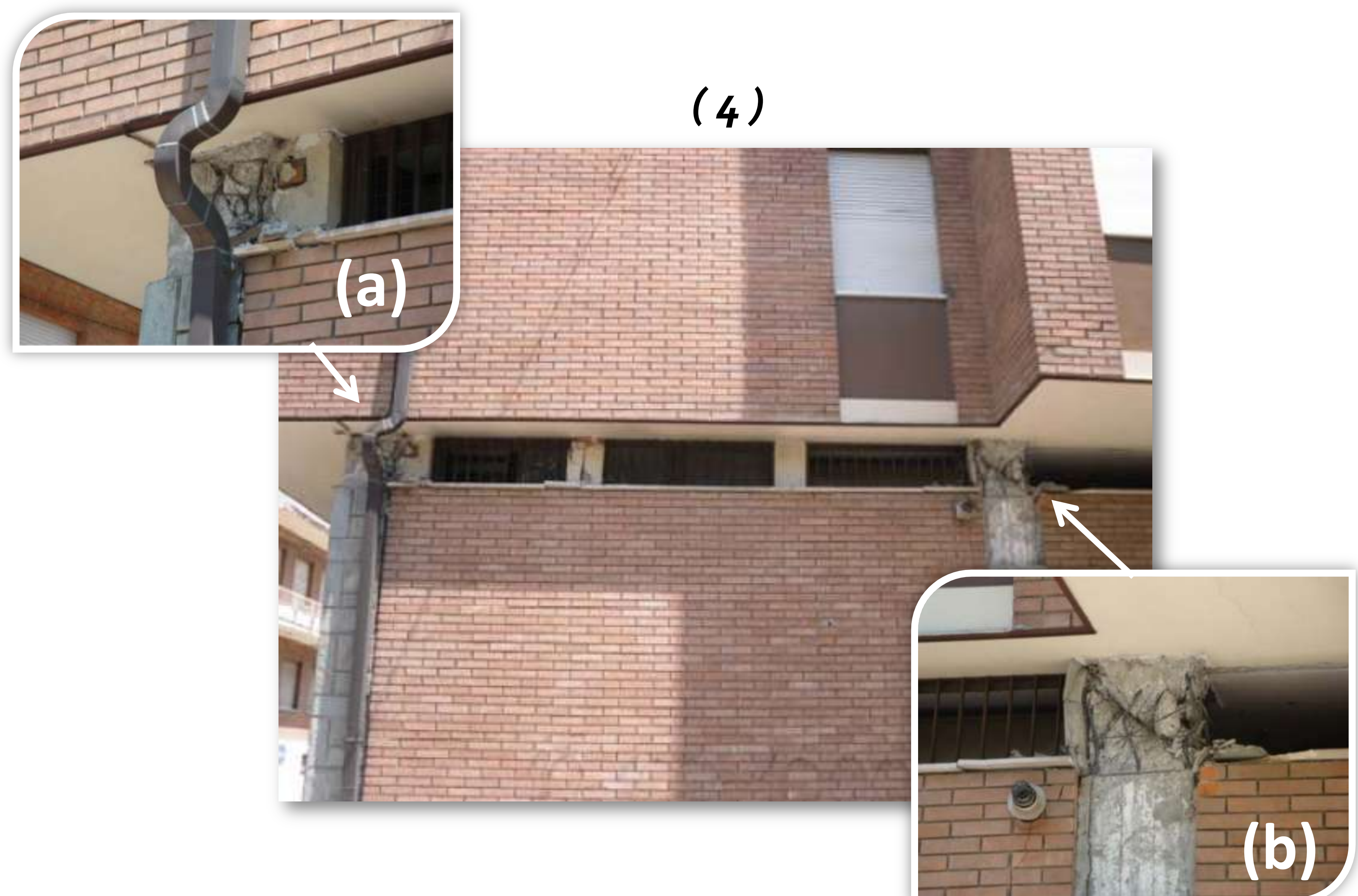


(2)



(3)

(a)



(4)

(a)

(b)