

Kaikoura Earthquake

Wellington Ground Motion Characteristics

20/12/2016

KAIKOURA EQ Acc. (g) NS

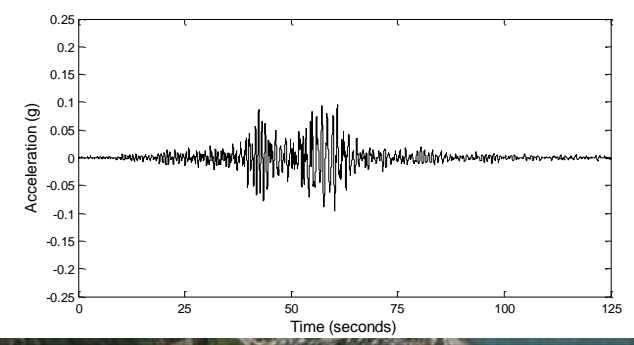
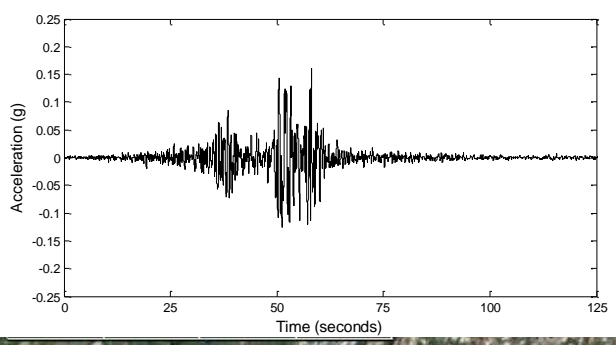
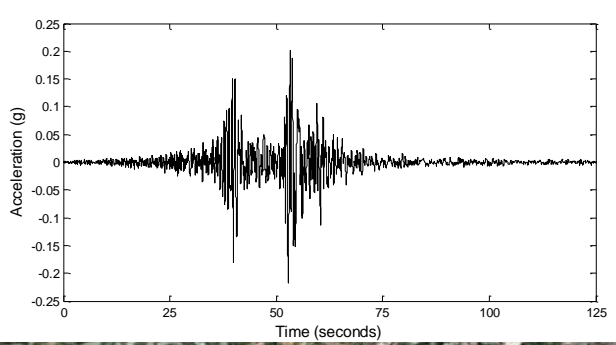
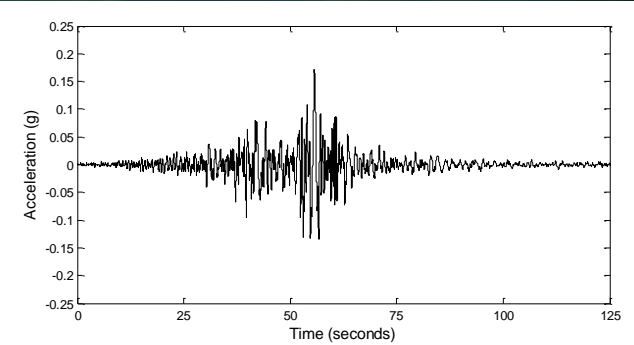
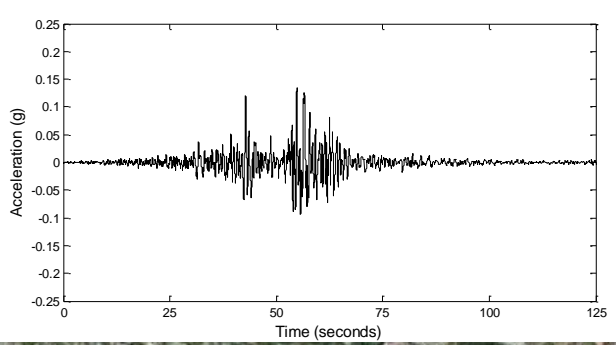
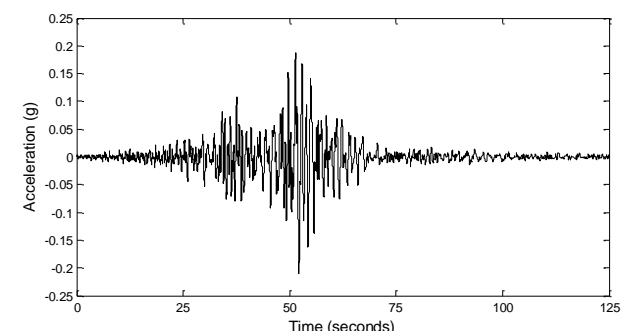
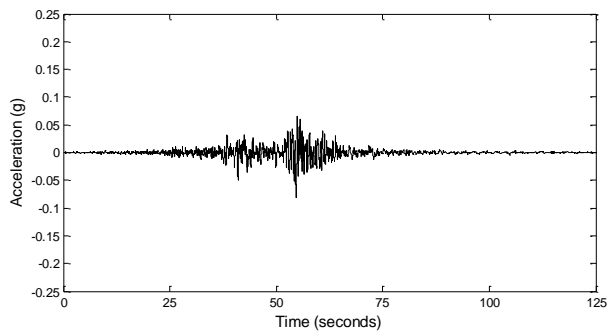
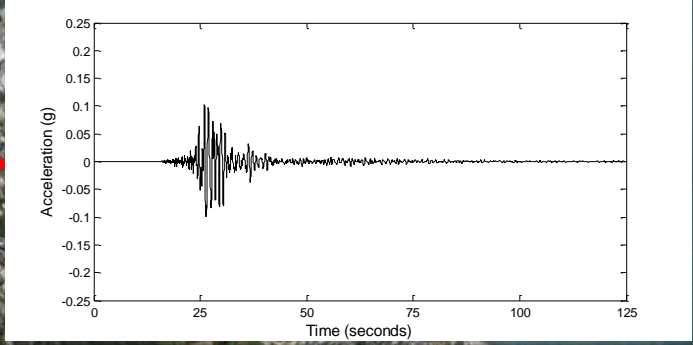
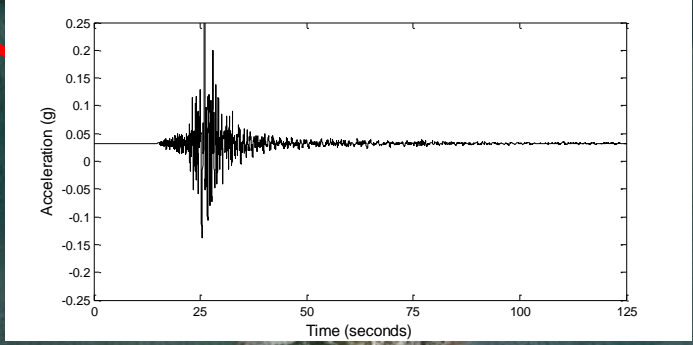
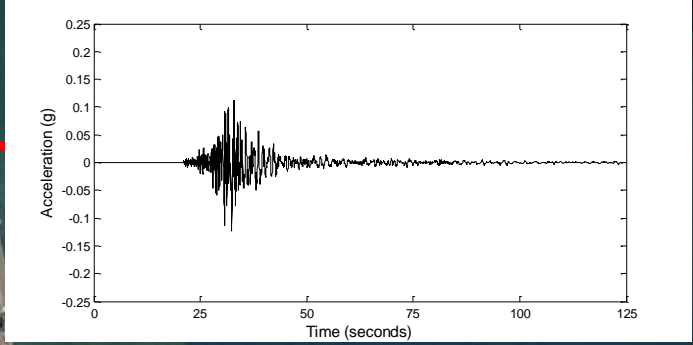
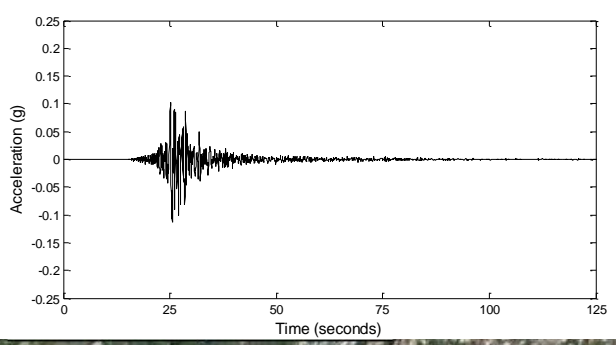
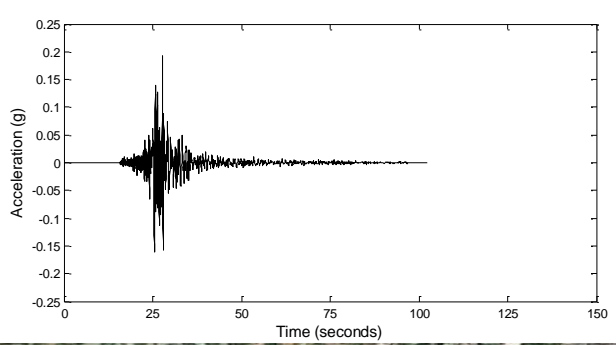
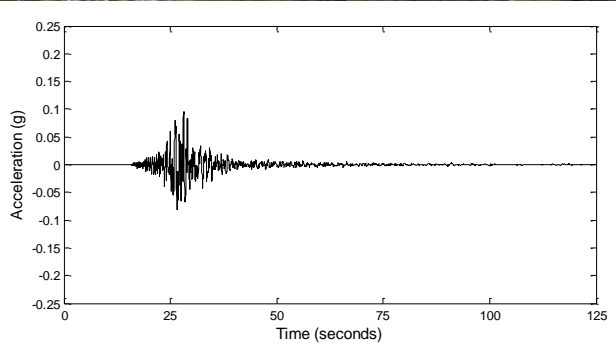
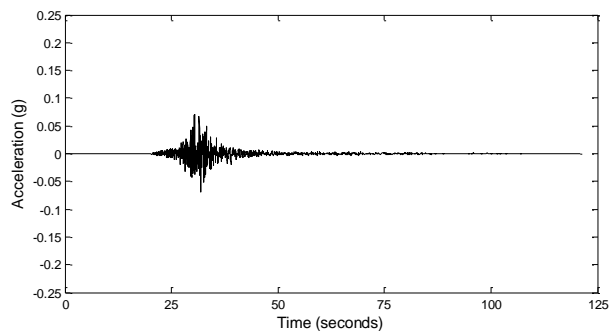


Image © 2016 TerraMetrics

Image © 2016 DigitalGlobe

SEDDON EQ Acc. (g) NS



KAIKOURA EQ Acc. (g) EW

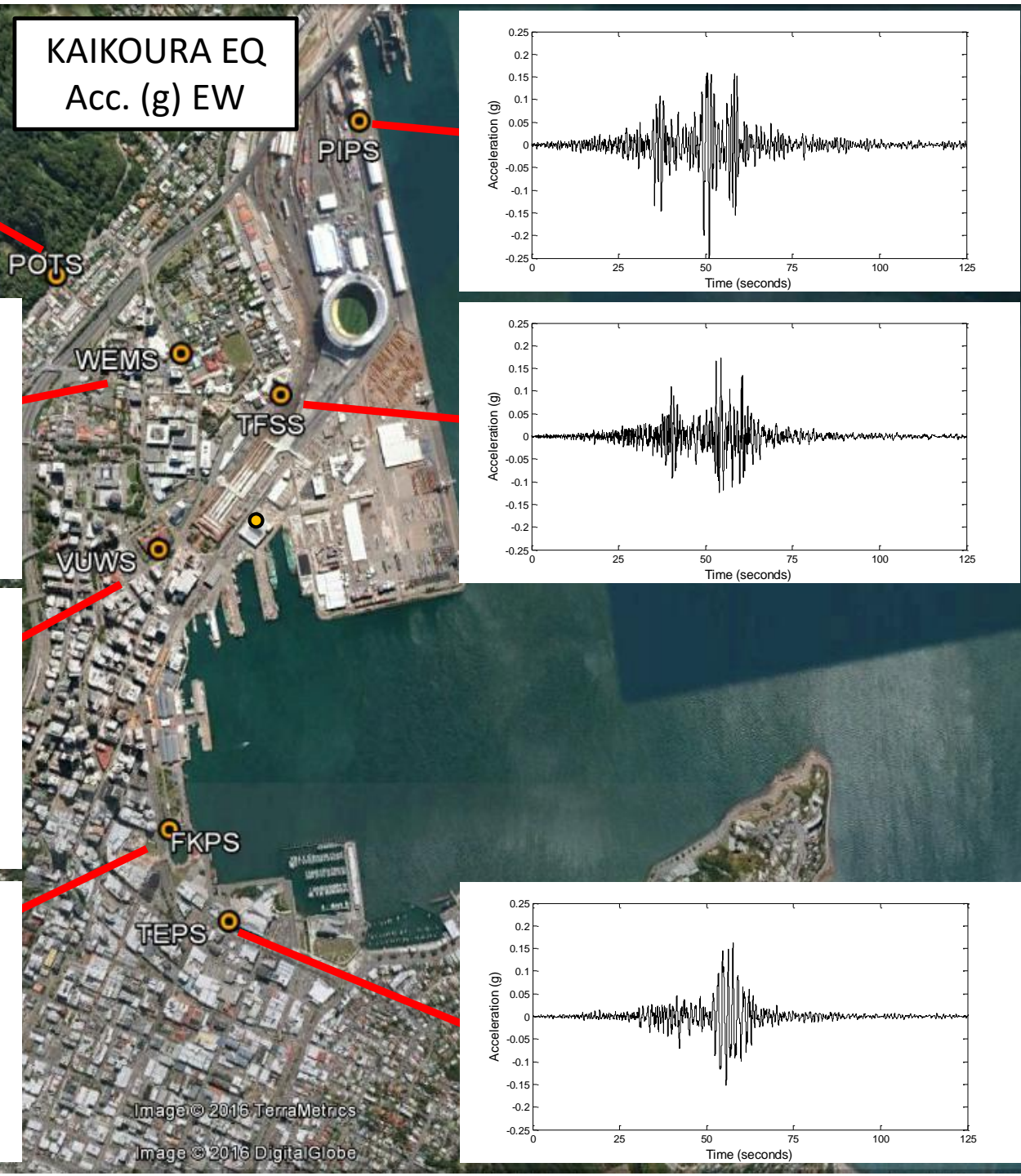
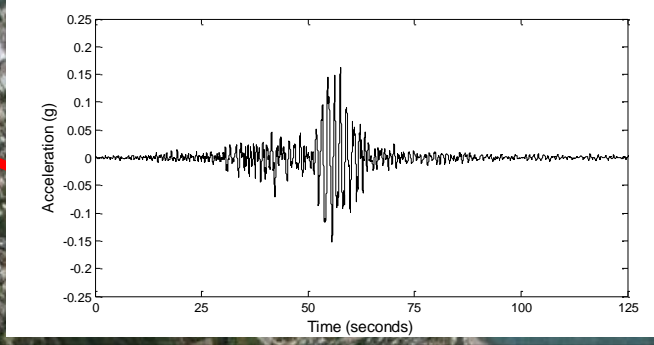
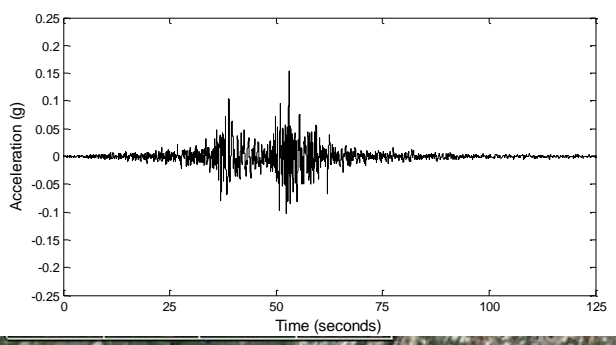
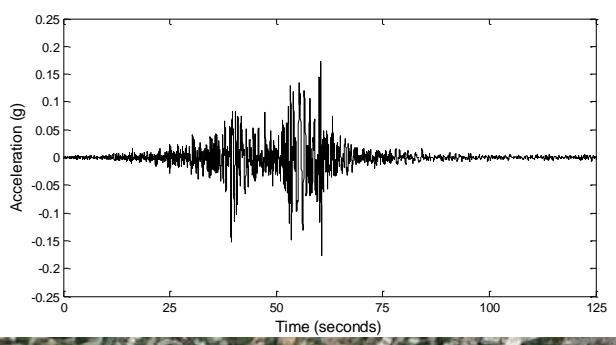
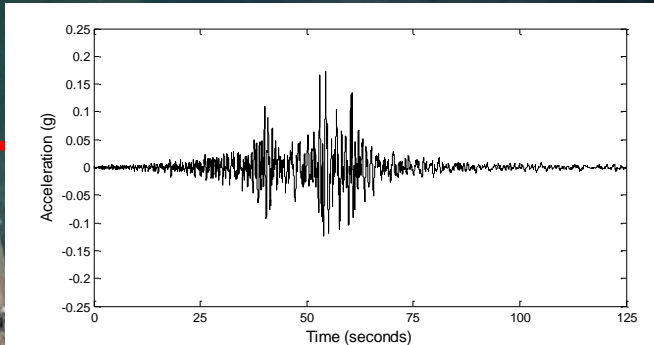
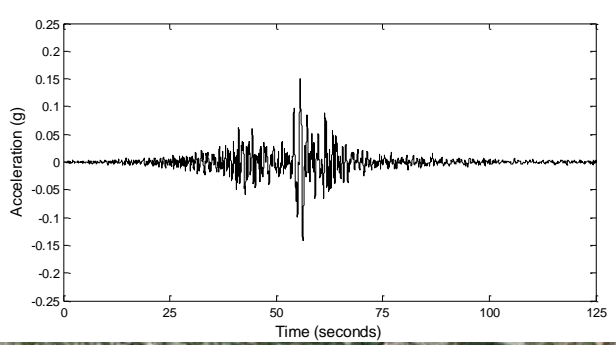
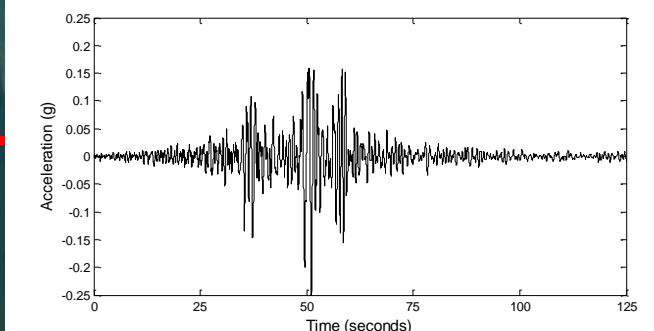
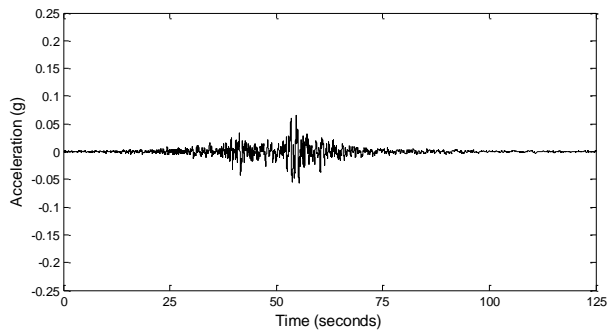
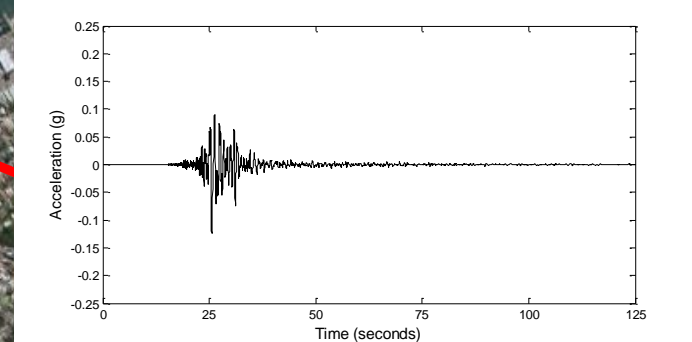
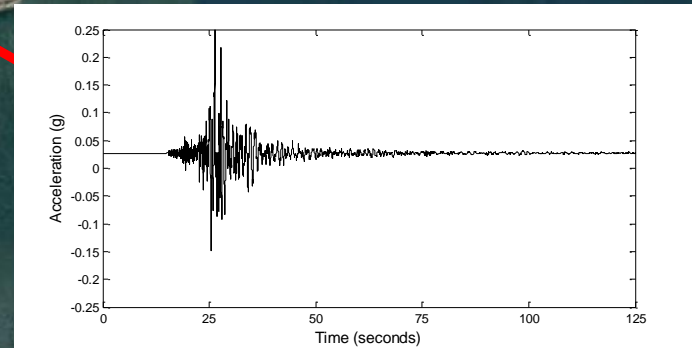
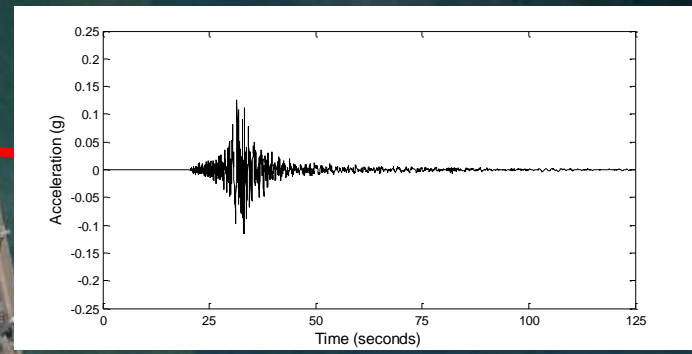
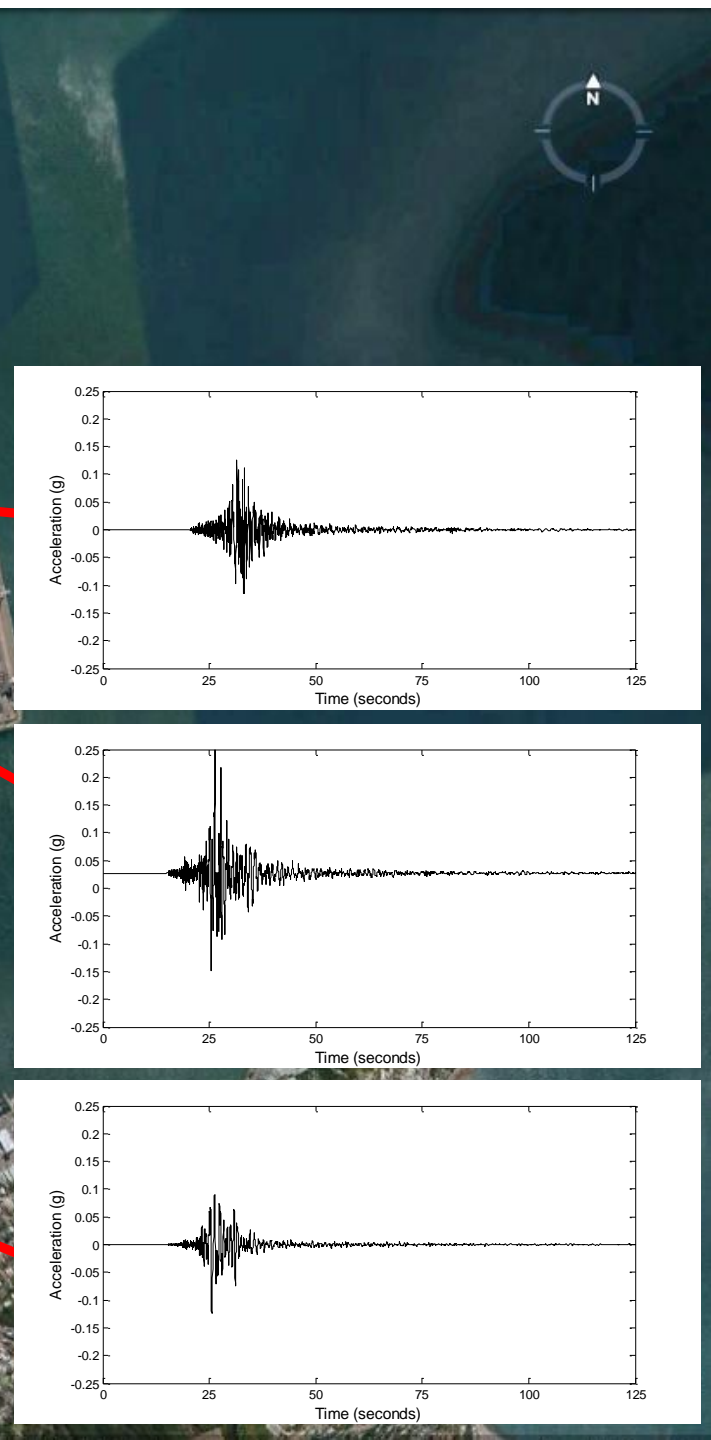
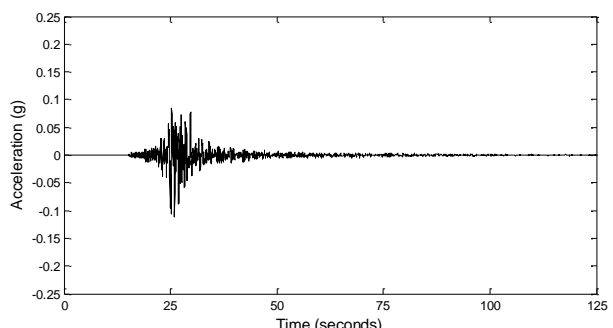
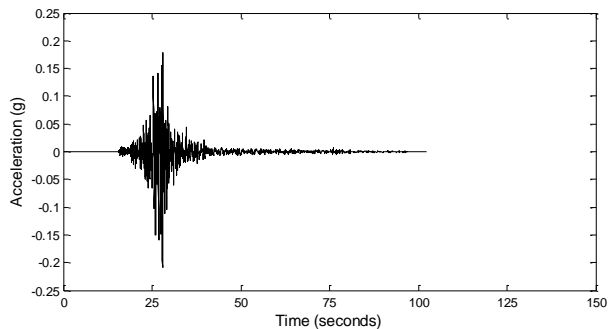
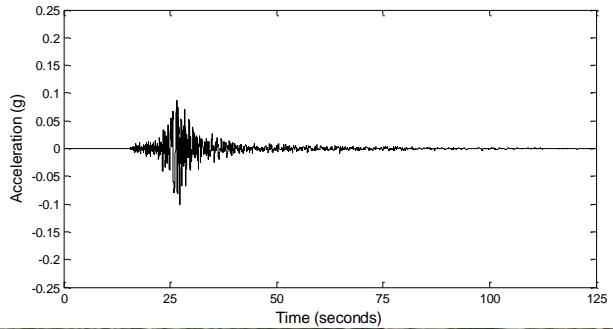
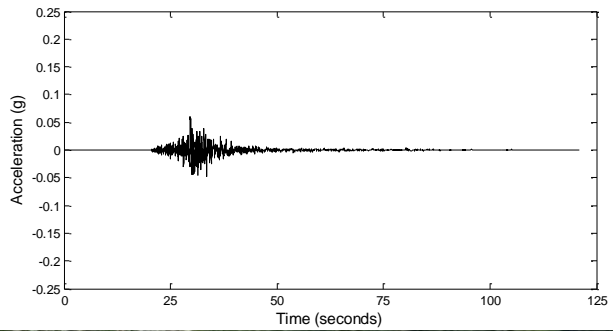


Image © 2016 TerraMetrics

Image © 2016 DigitalGlobe

SEDDON EQ Acc. (g) EW



KAIKOURA EQ Response Spectra

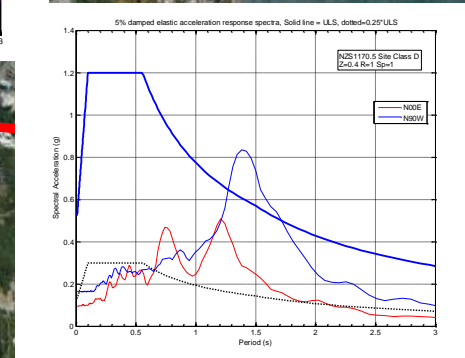
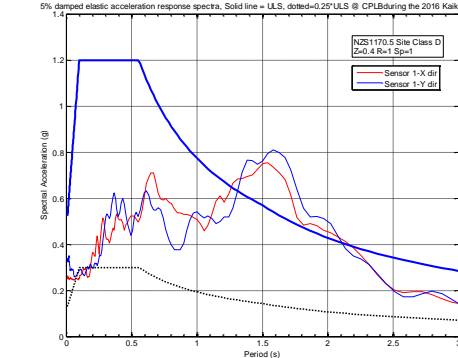
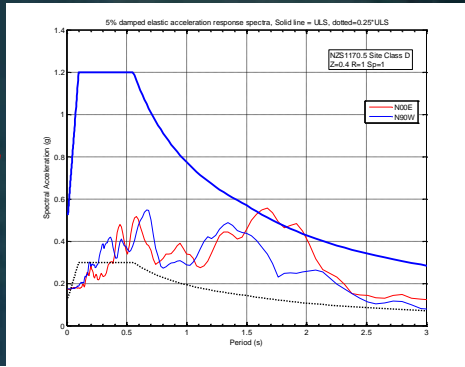
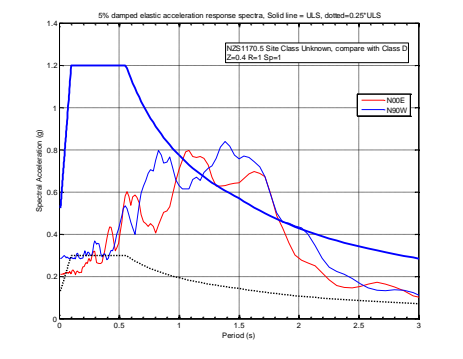
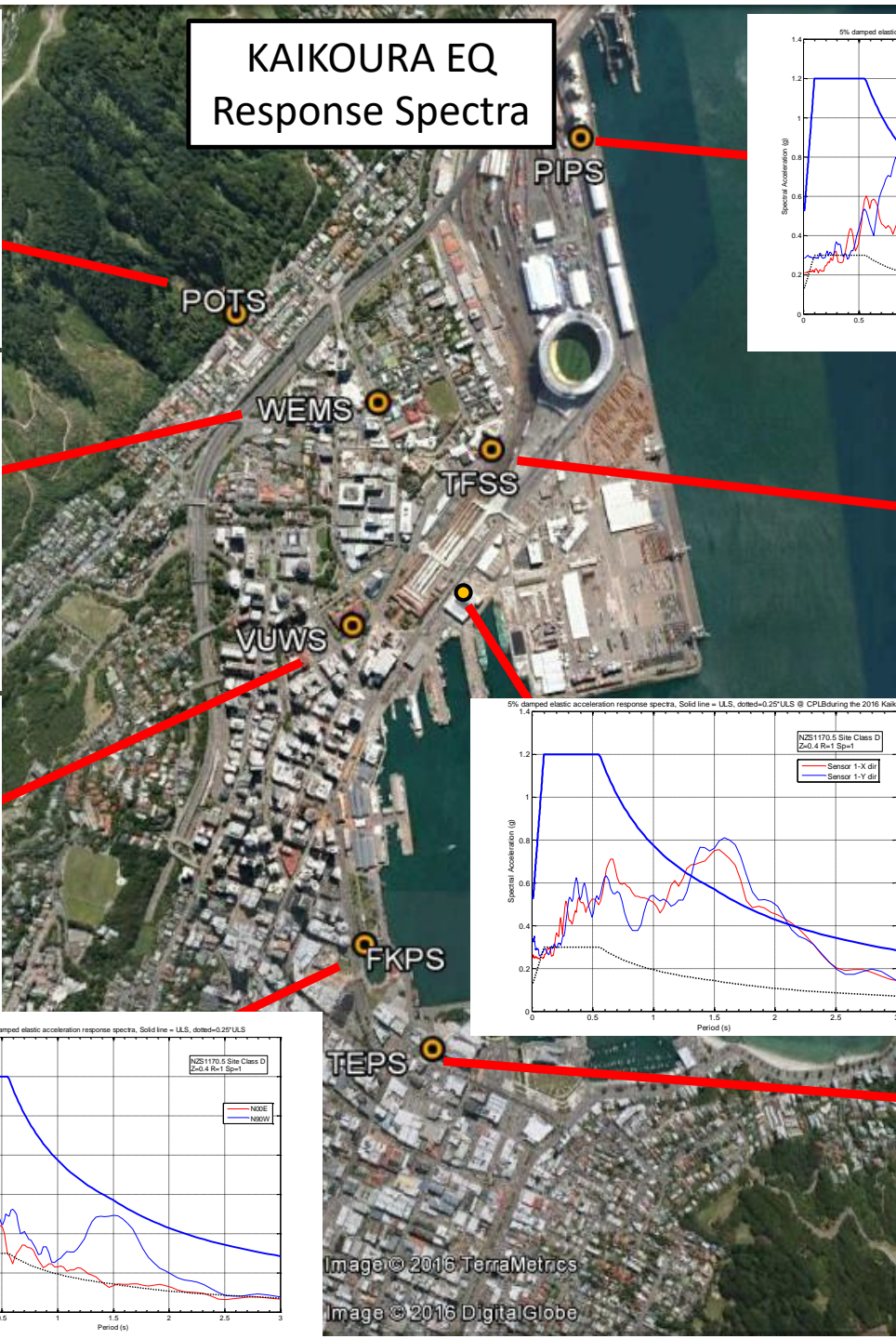
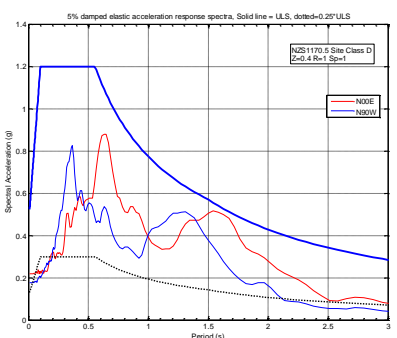
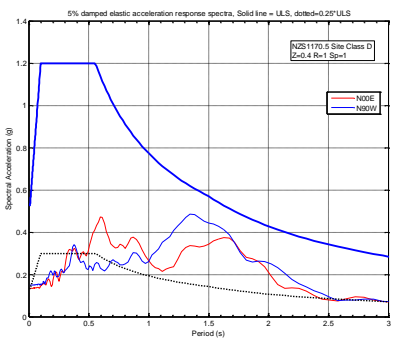
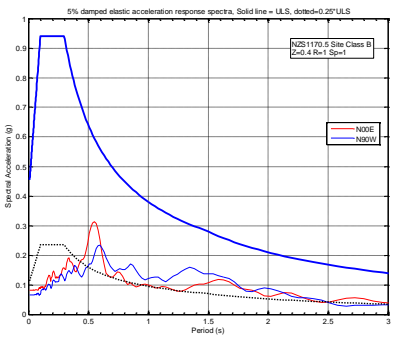


Image © 2016 TerraMetrics

Image © 2016 DigitalGlobe

SITE PERIOD ESTIMATES HVSr (Wotherspoon)



Rock

$T_0 > 2$ s

$T_0 = 0.80$ s

$T_0 = 1.3$ s

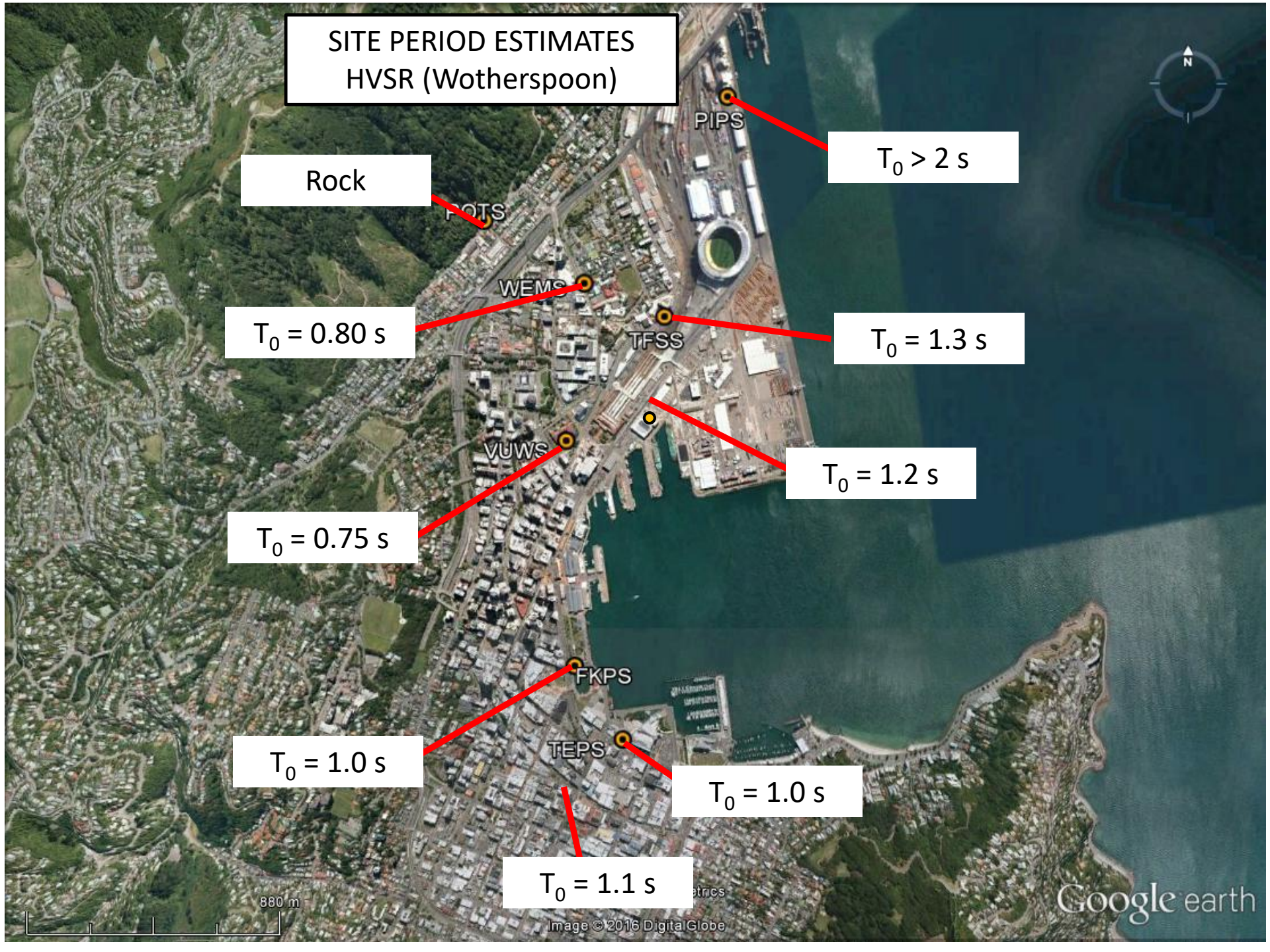
$T_0 = 0.75$ s

$T_0 = 1.2$ s

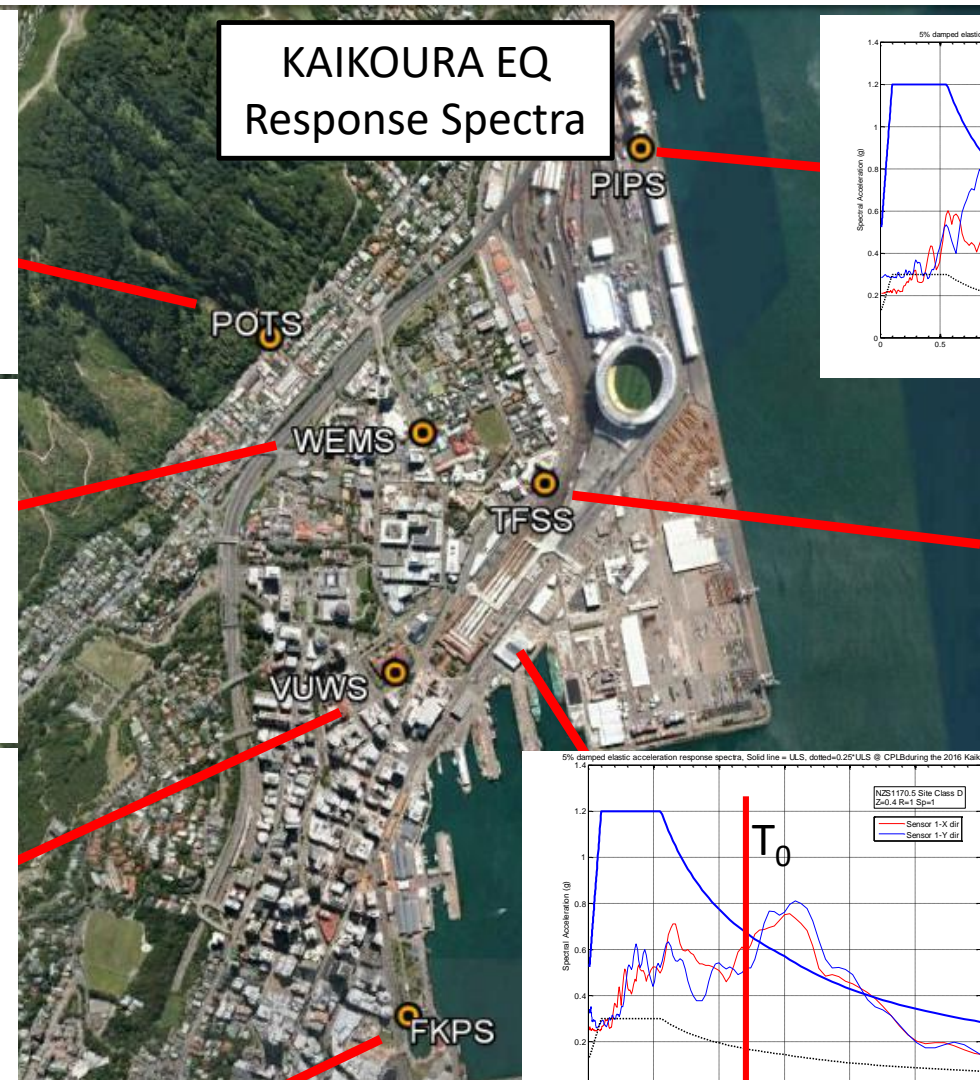
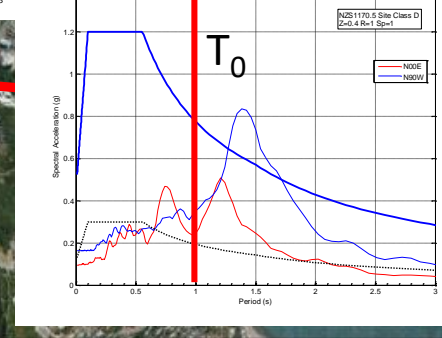
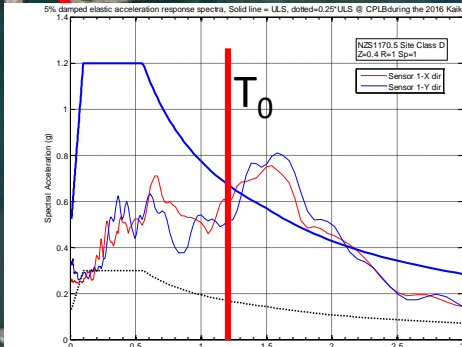
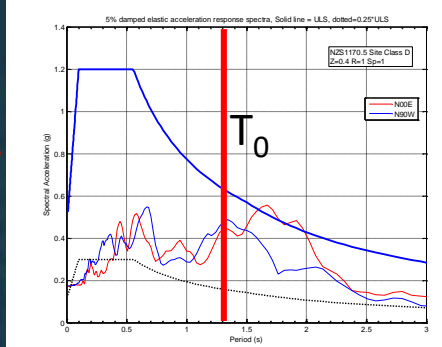
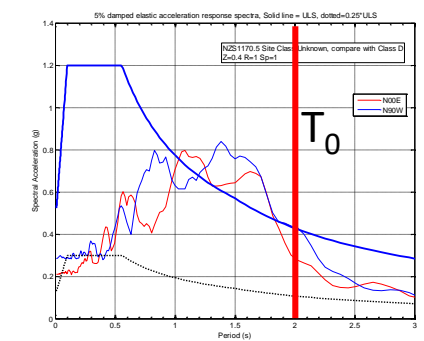
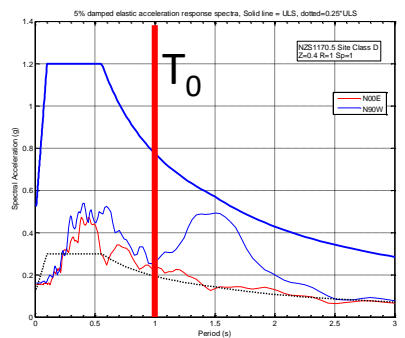
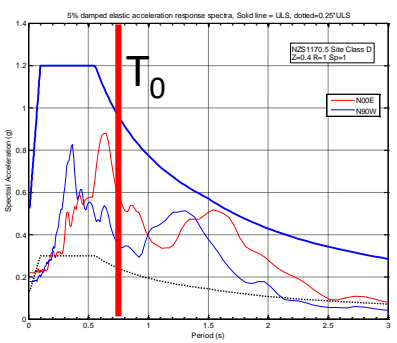
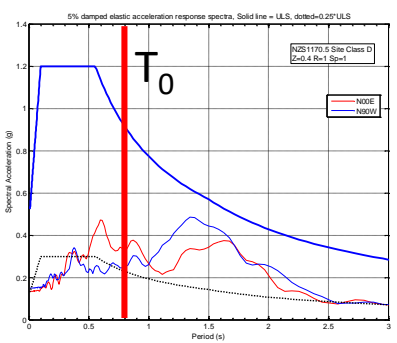
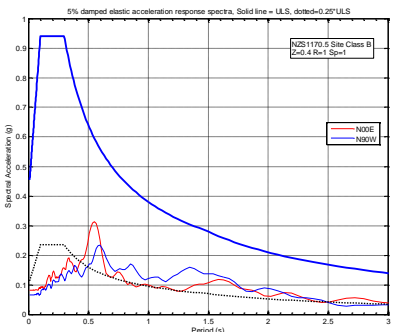
$T_0 = 1.0$ s

$T_0 = 1.0$ s

$T_0 = 1.1$ s



KAIKOURA EQ Response Spectra



SEDDON EQ Response Spectra

